

Diese Arbeitsblätter sind zur Ergänzung des Unterrichtswerkes Piccolini (Band 2). Mit dem Kauf von Piccolini (Band 2) sind Sie berechtigt, die Arbeitsblätter kostenlos von unserer Homepage herunterzuladen und zu verwenden.

**Querflöte**

# **Arbeitsblätter zum Notenschreiben**

für

**PICCOLINI**

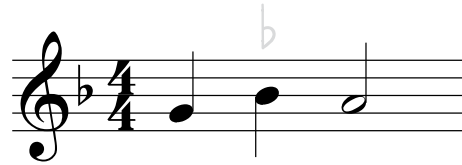
Band 2

**Horst Rapp  
Claudia Schade**

Zeichnungen: Georg Koch

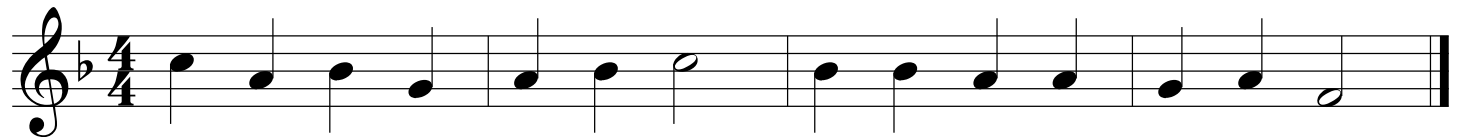
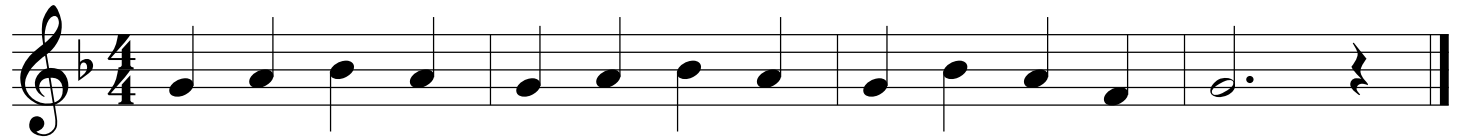
Rapp-Verlag Hebelweg 4 D-79410 Badenweiler  
Internet: [www.rapp-verlag.de](http://www.rapp-verlag.de) E-Mail: [info@rapp-verlag.de](mailto:info@rapp-verlag.de)  
Tel. 07632/828283 Fax 07632/828284

# Das $\flat$ am Anfang der Notenzeile

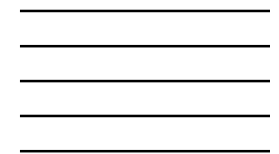
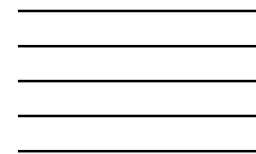
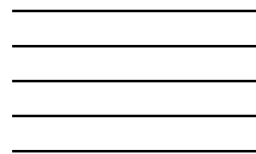
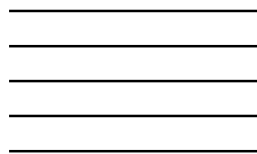
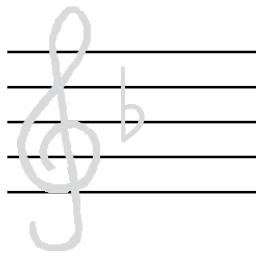
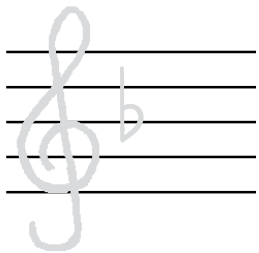


Steht am Anfang der Notenzeile ein  $\flat$ , so wird bei allen h-Noten der Ton  $\flat$  gespielt.

Umkreise alle h-Noten, die zu dem Ton  $\flat$  erniedrigt werden.



Zeichne den Violinschlüssel mit dem  $\flat$ -Vorzeichen.



# Hei, lustig ihr Kinder

---

---

---

---

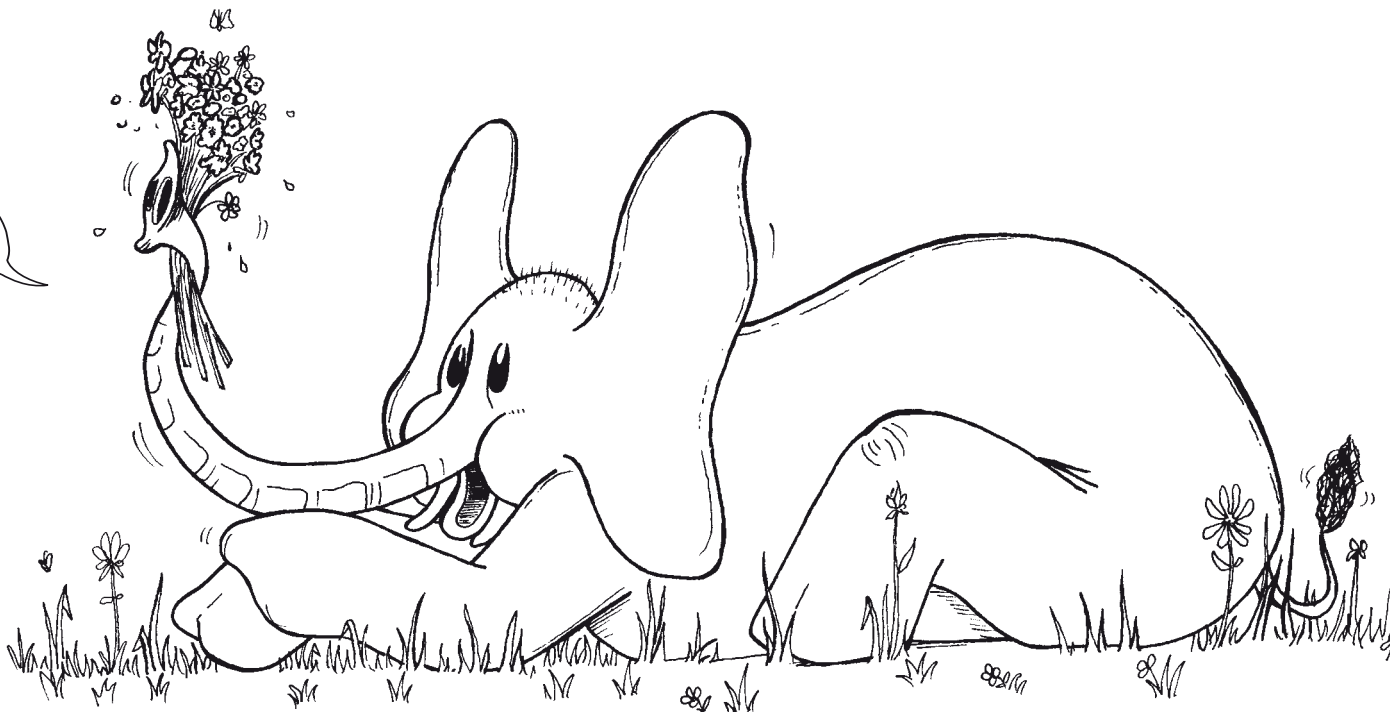
---

---

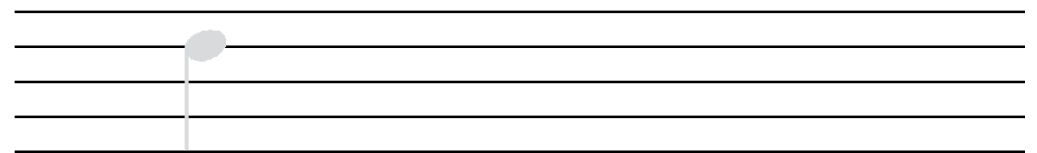
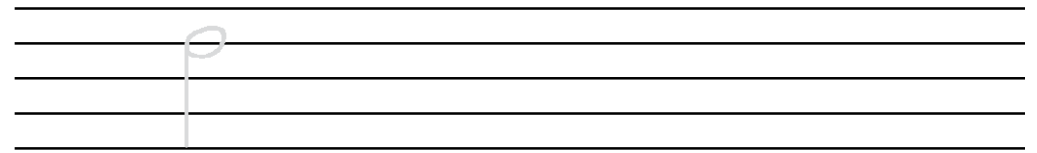
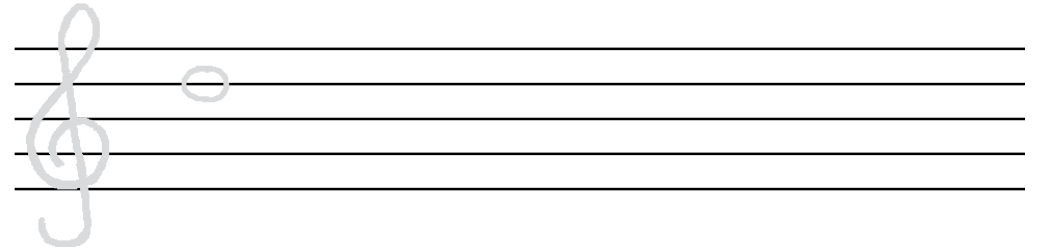
---

---

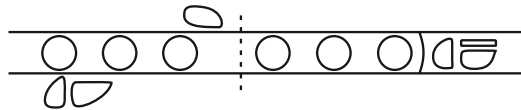
Schreibe bitte  
das Lied ab.



# Die Note d

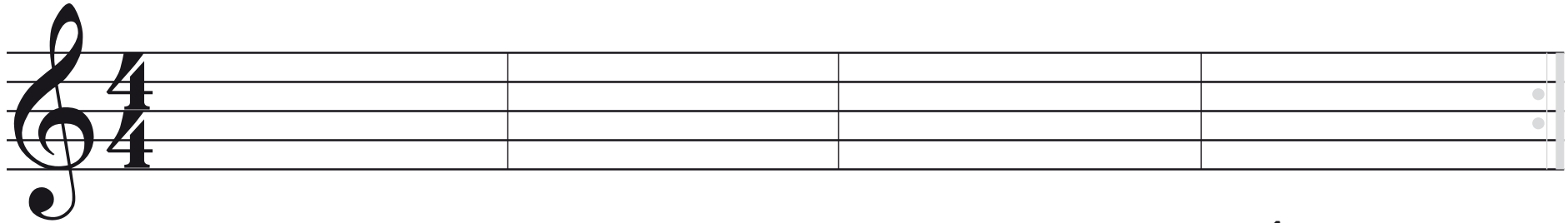


Zeichne bitte  
meinen Ton und den dazu-  
gehörenden Griff.

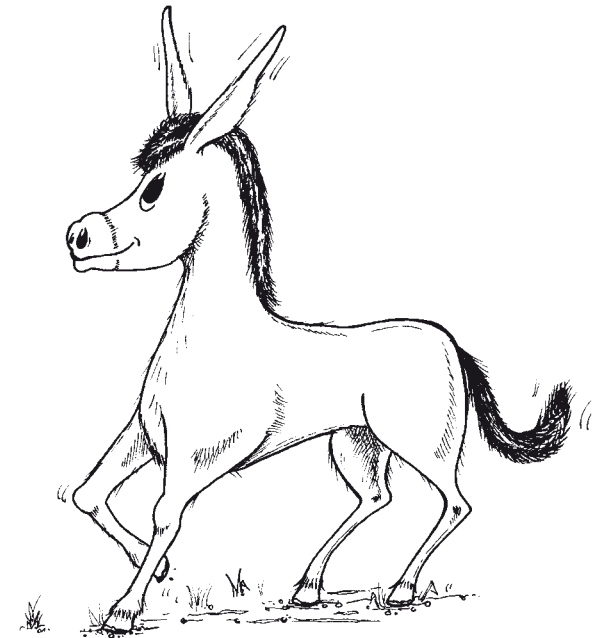
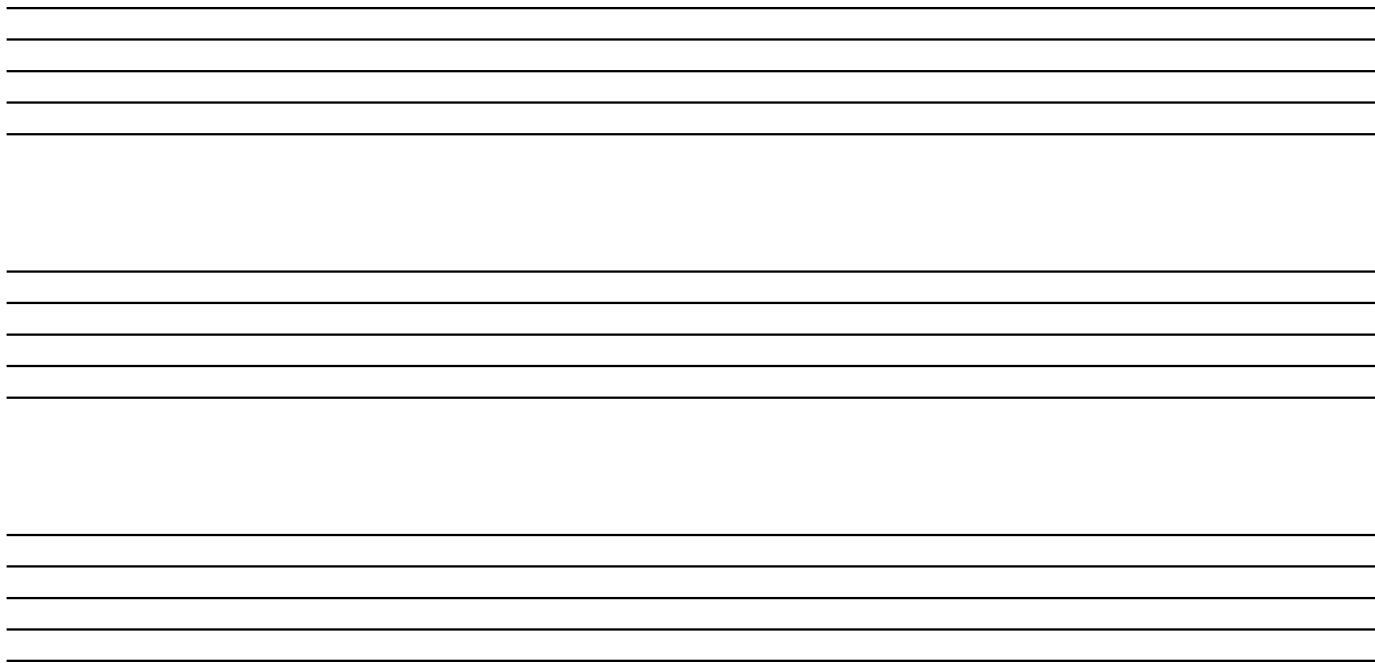


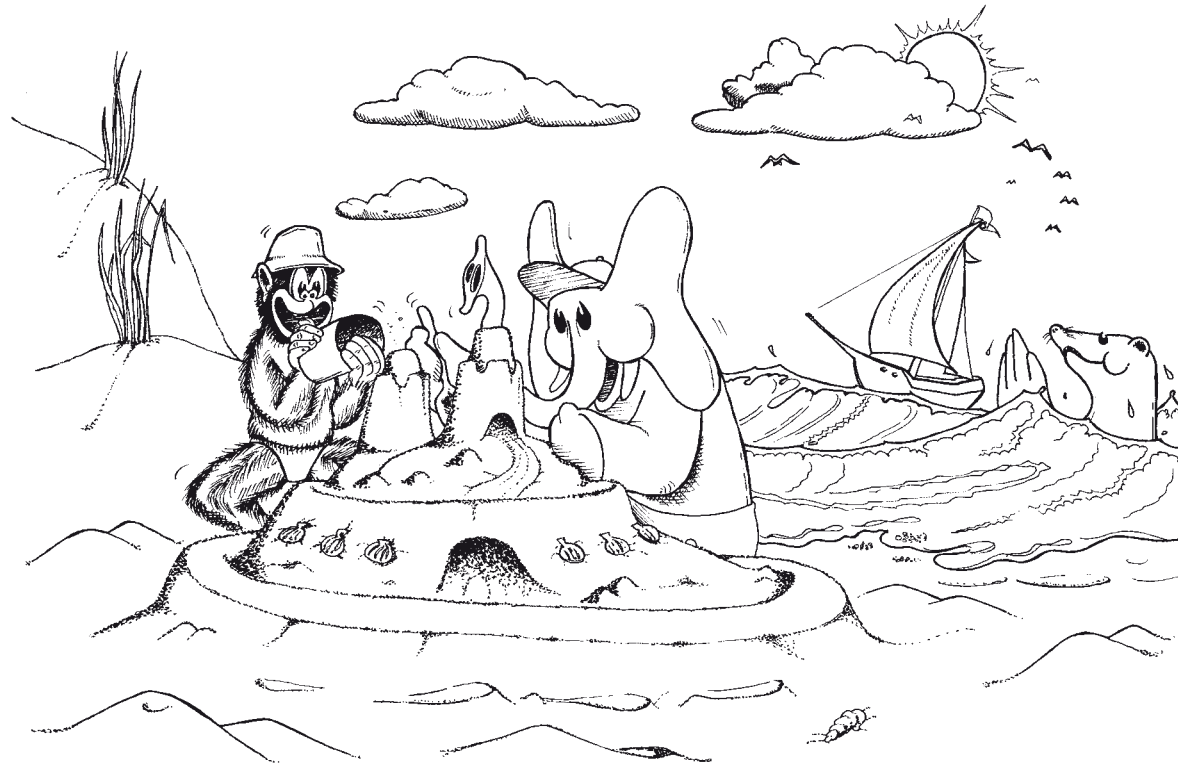
# Das Wiederholungszeichen

Zeichne das Wiederholungszeichen nach. Zeige mit dem Finger, wie gespielt wird.



## Esels-Kanon





## Am Strand

---

---

---

---

---

---

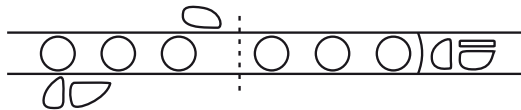
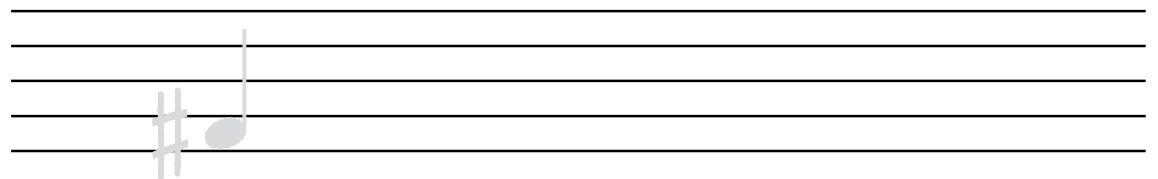
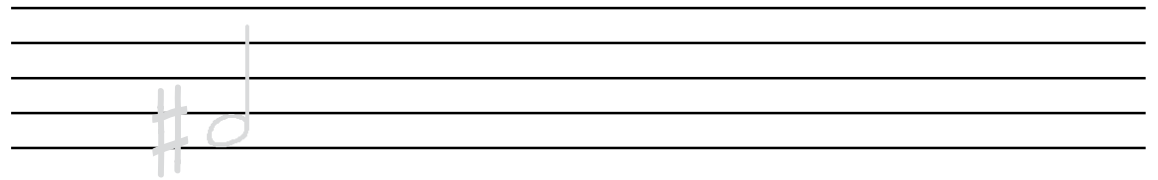
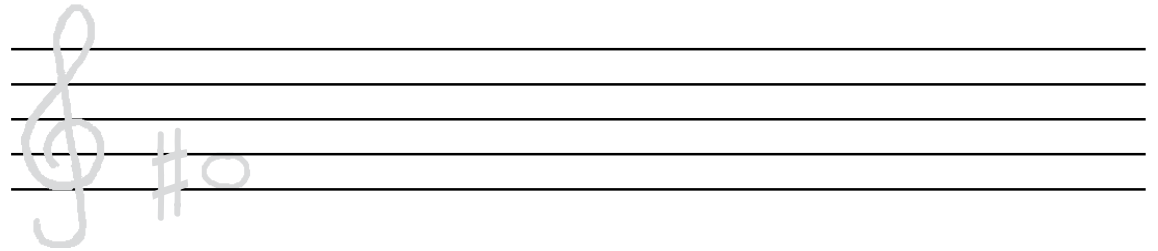
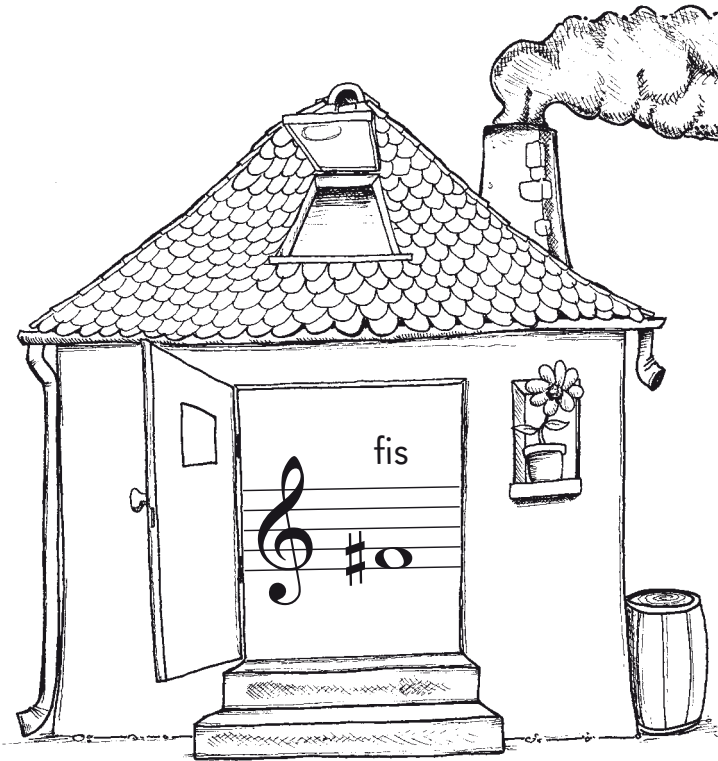
---

---

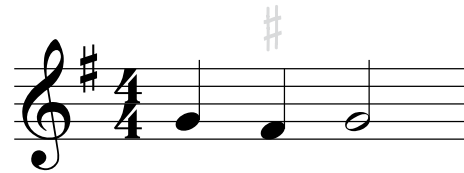
---

---

# Die Note fis

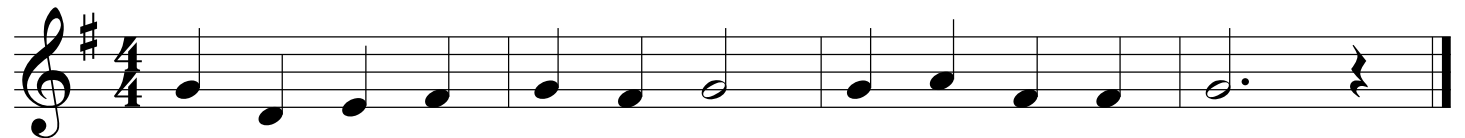
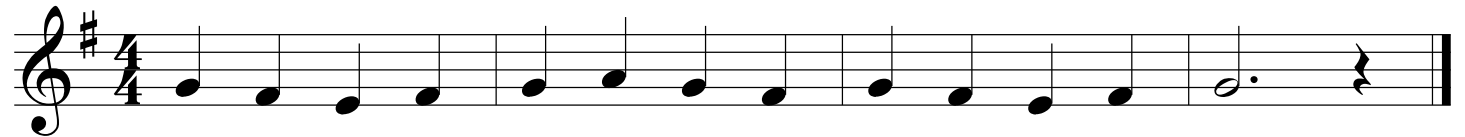


# Das Kreuz # am Anfang der Notenzeile

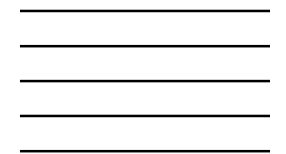
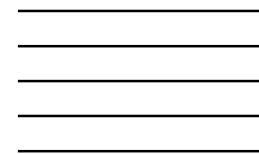
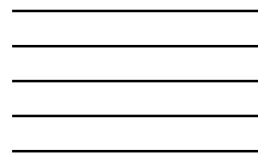
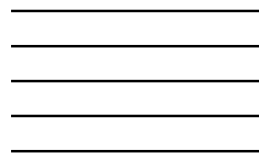
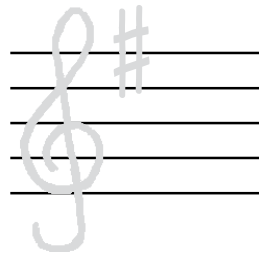
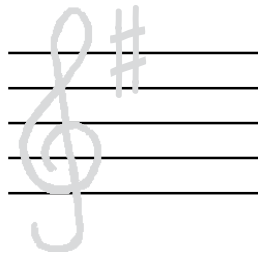


Steht am Anfang der Notenzeile ein Kreuz # , so wird bei allen f-Noten der Ton fis gespielt.

Umkreise alle f-Noten, die zu dem Ton fis erhöht werden.



Zeichne den Violschlüssel mit dem Kreuz-Vorzeichen.





# Wenn der frische Herbstwind weht



---

---

---

---

---

---

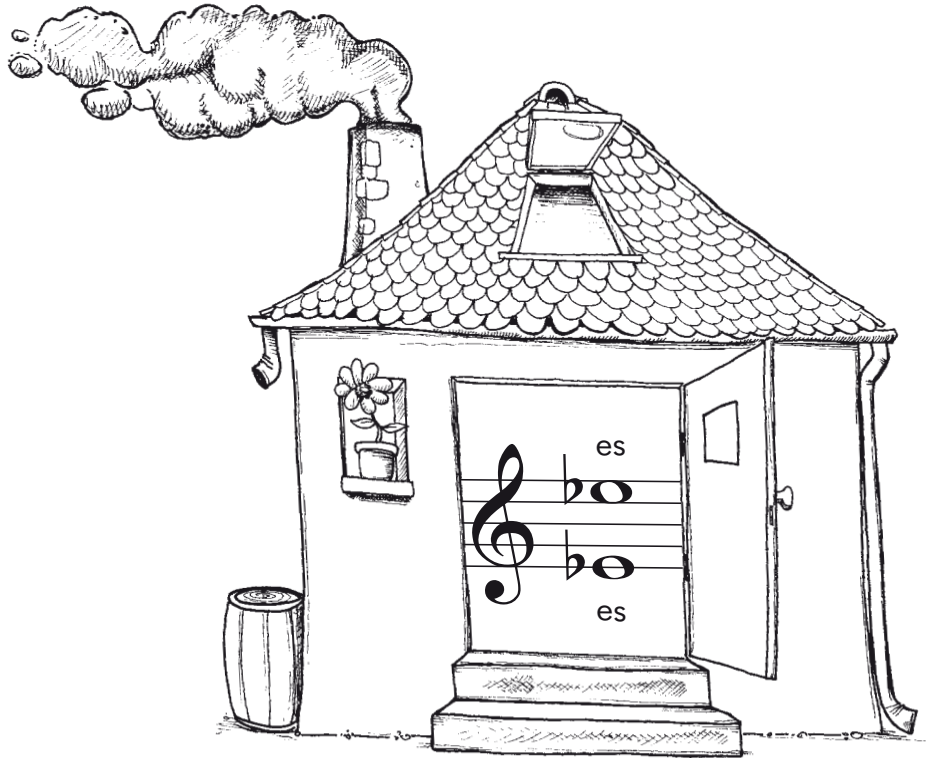
---

---

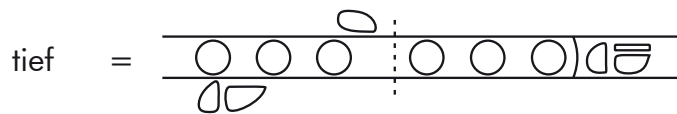
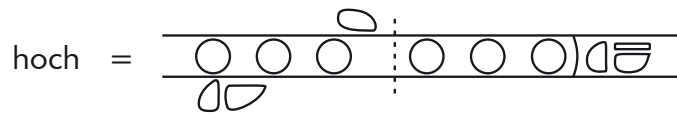
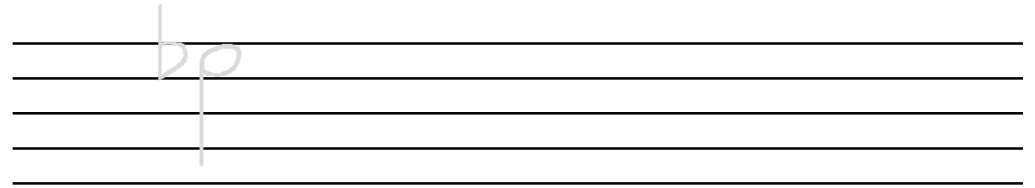
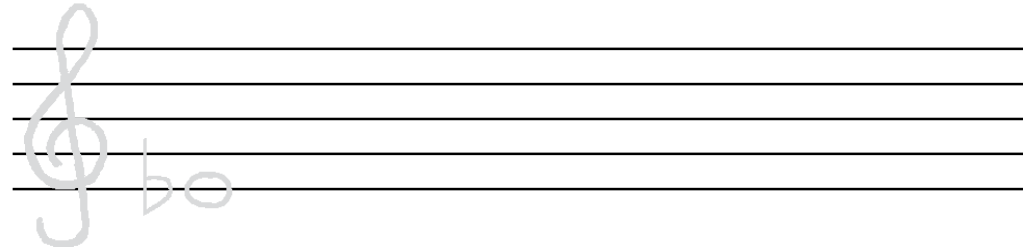
---

---

# Die Noten tiefes es und hohes es

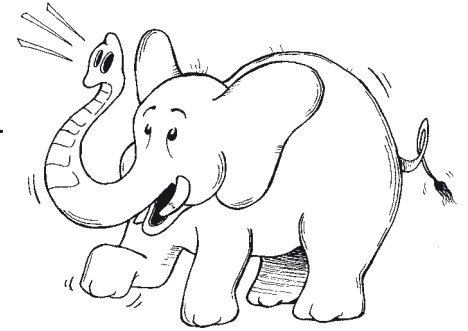


Zeichne die Noten es, tief und hoch.

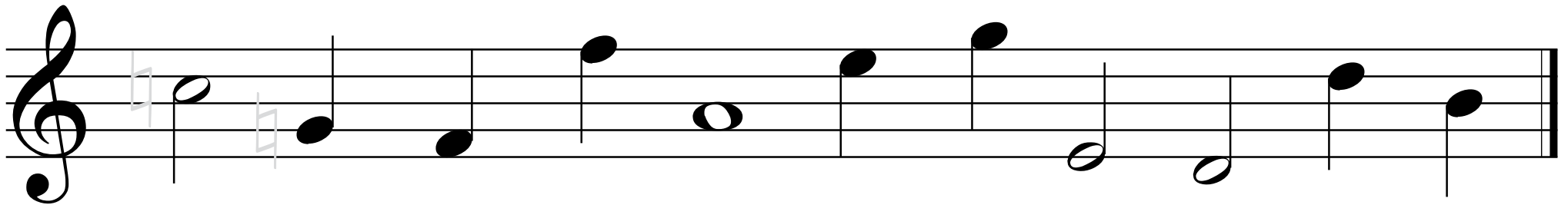


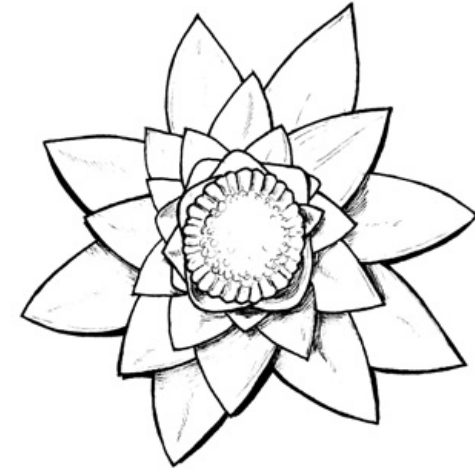
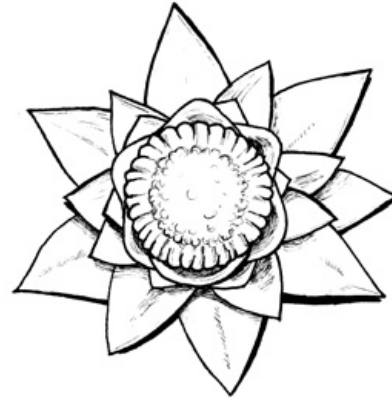
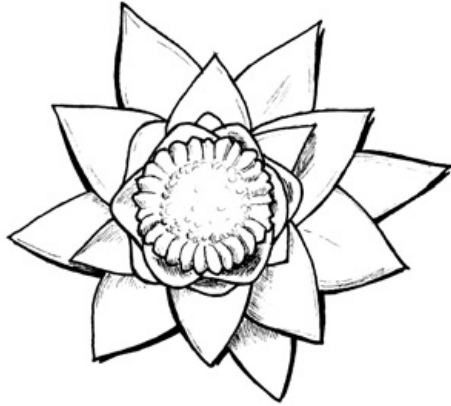
# Das Auflösungszeichen

Male zuerst die Auflösungszeichen nach und zeichne dann eigene.



Zeichne vor jede Note ein Auflösungszeichen.





# Seerosen

chinesische Melodie

---

---

---

---

---

---

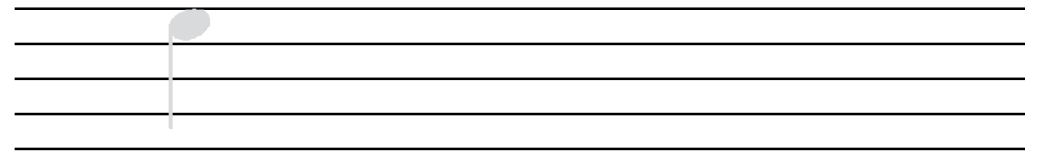
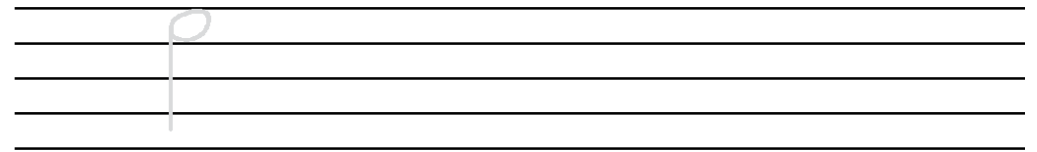
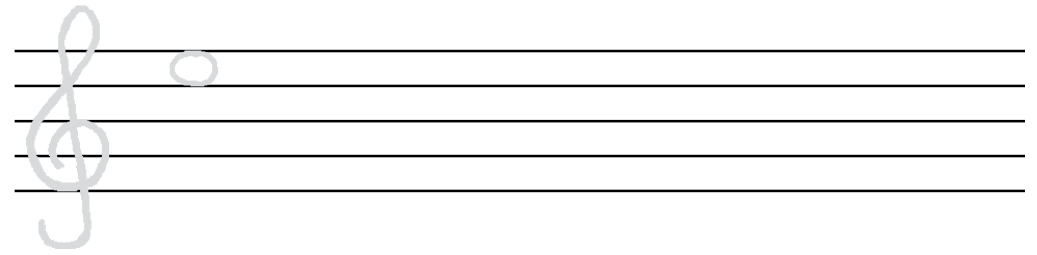
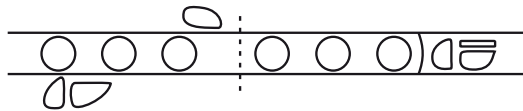
---

---

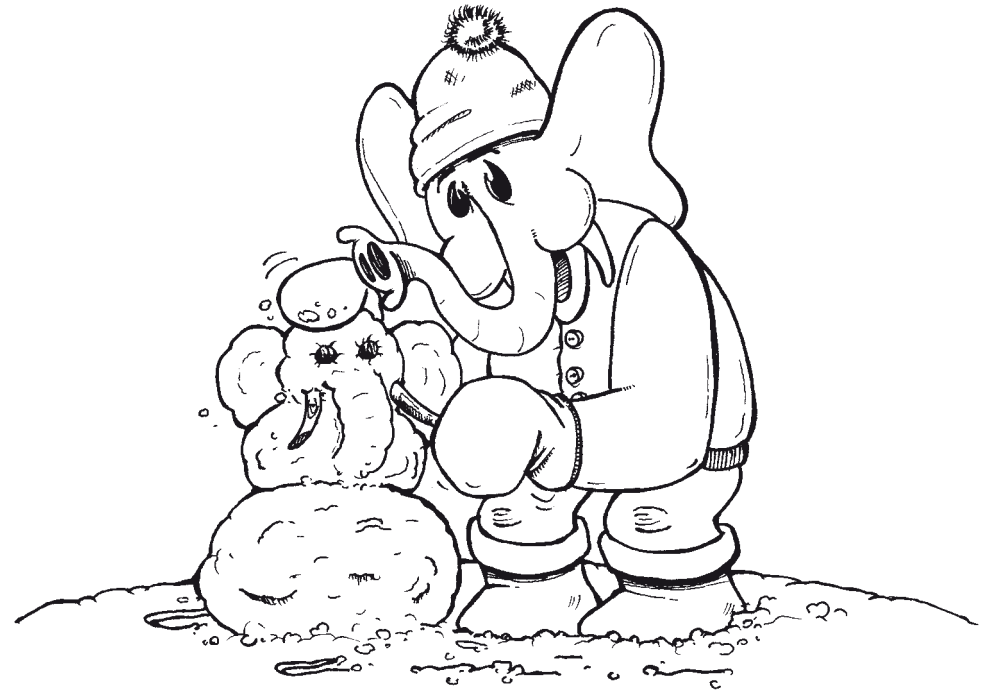
---

---

# Die Note e



A, a, a, der Winter, der ist da!



---

---

---

---

---

---

---

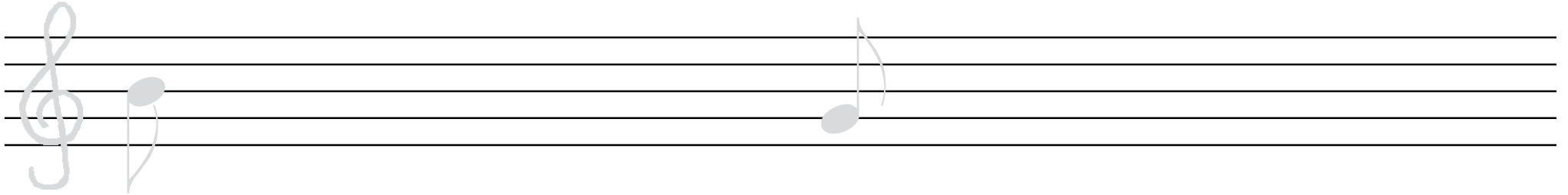
---

---

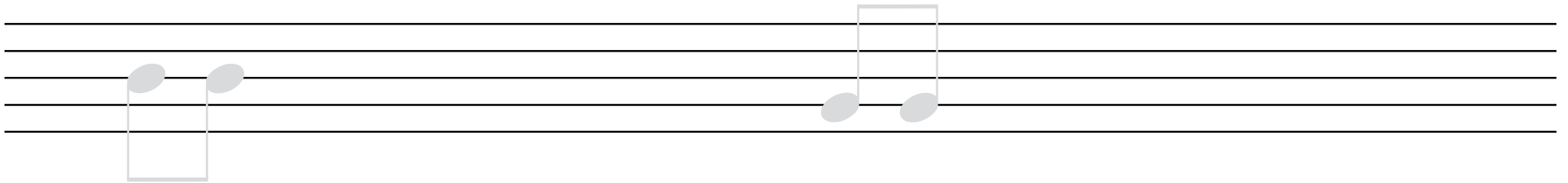
---

# Achtelnoten

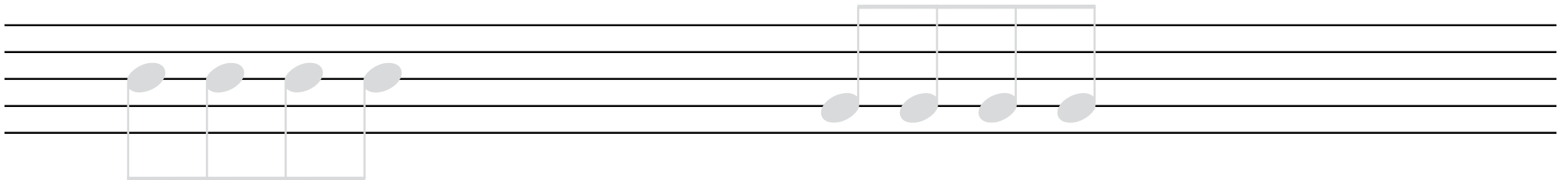
Zeichne Achtelnoten mit Fähnchen.



Zeichne Achtelnoten mit Balken, in Zweiergruppen.

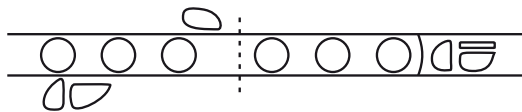
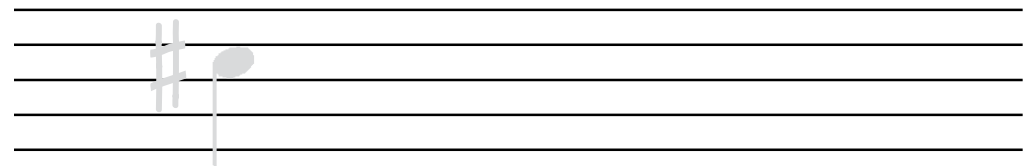
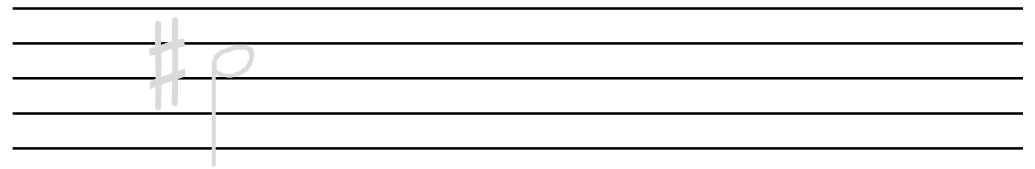
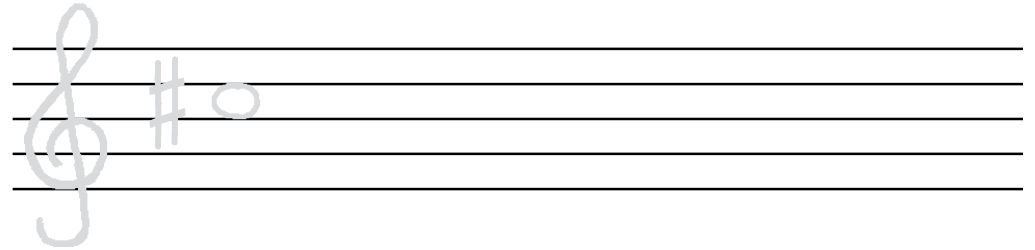


Zeichne Achtelnoten mit Balken, in Vierergruppen.



# Die Note cis

Zeichne die Note cis.





# Wenn der Löwe brüllt



Teil 1

---

---

---

---

Teil 2

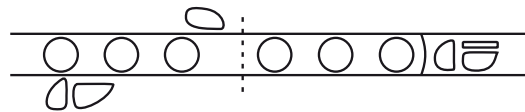
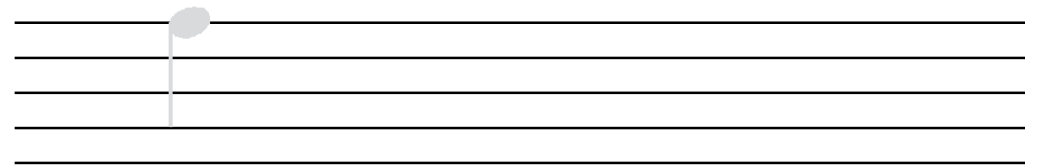
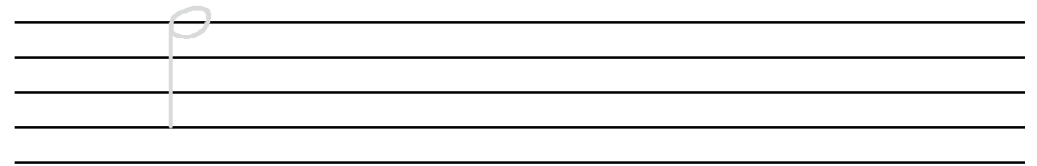
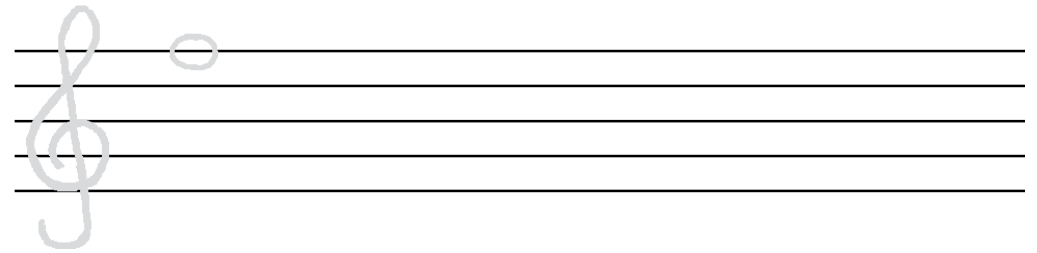
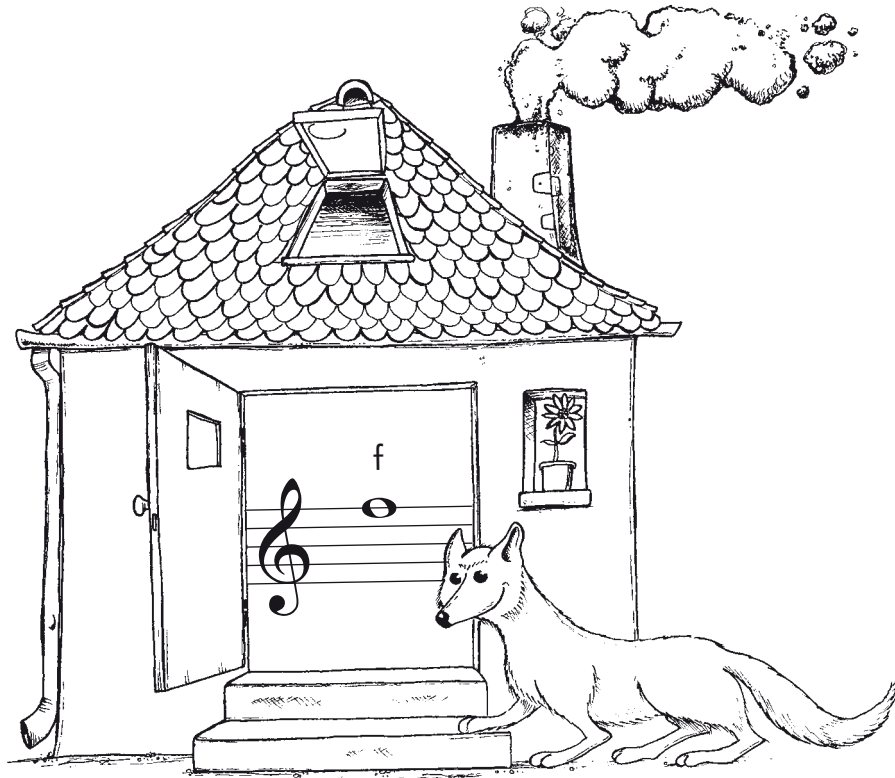
---

---

---

---

# Die Note f



Teil 1

# Abzählreim

---

---

---

---

---

---

---

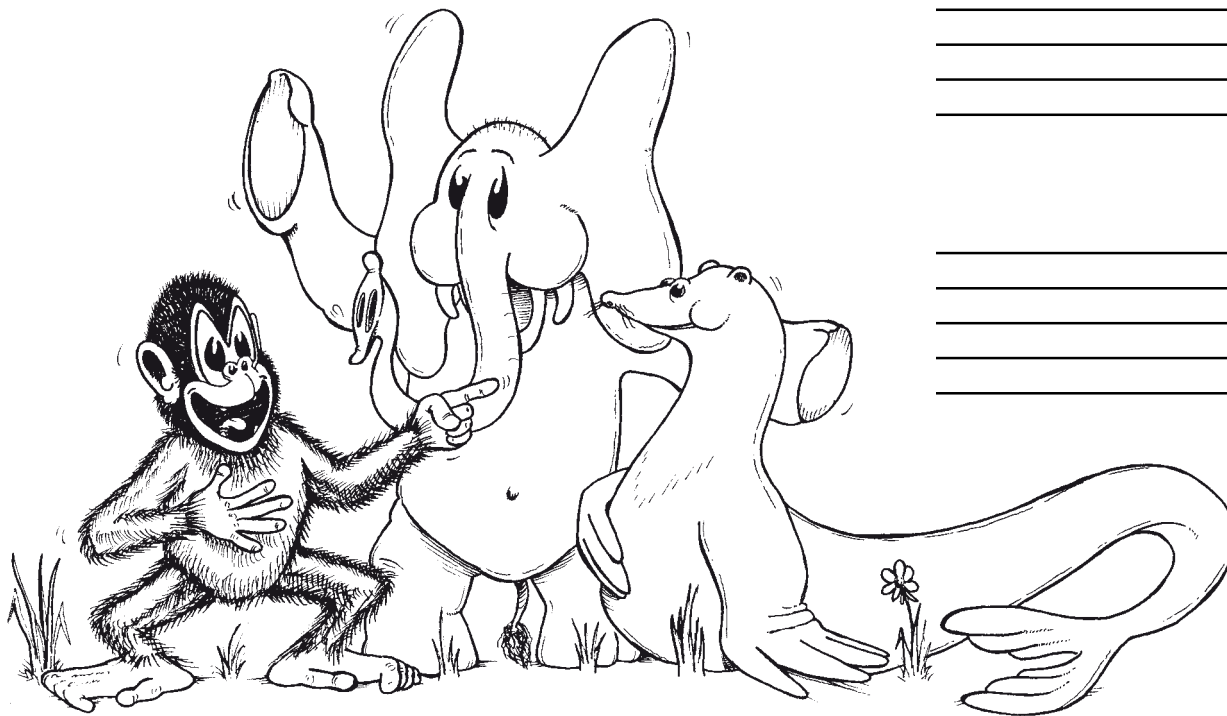
---

---

---

---

---



Teil 2

---

---

---

---

# Ringel, Ringel, Reihe



---

---

---

---

---

---

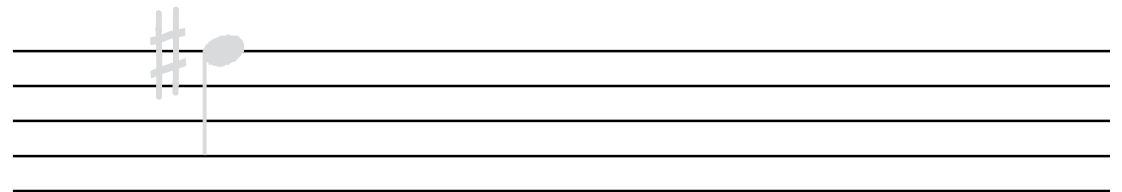
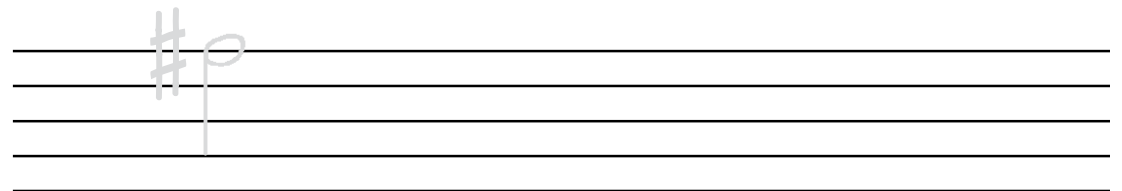
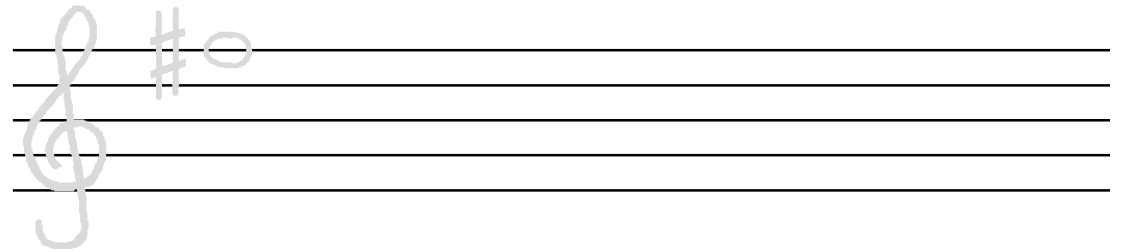
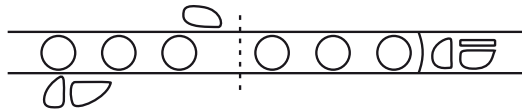
---

---

---

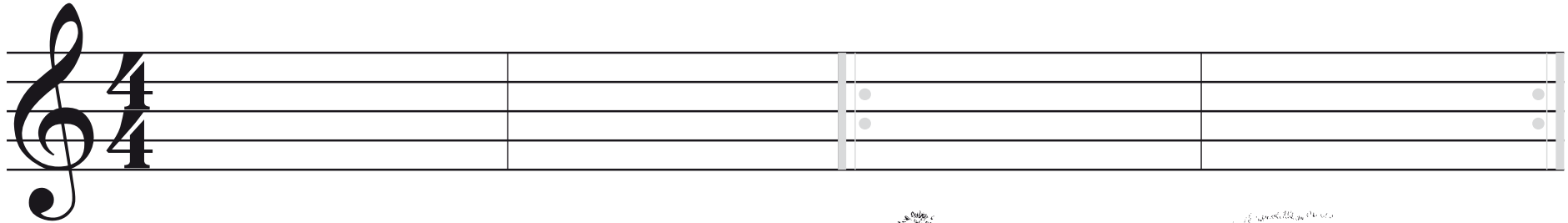
---

# Die Note fis

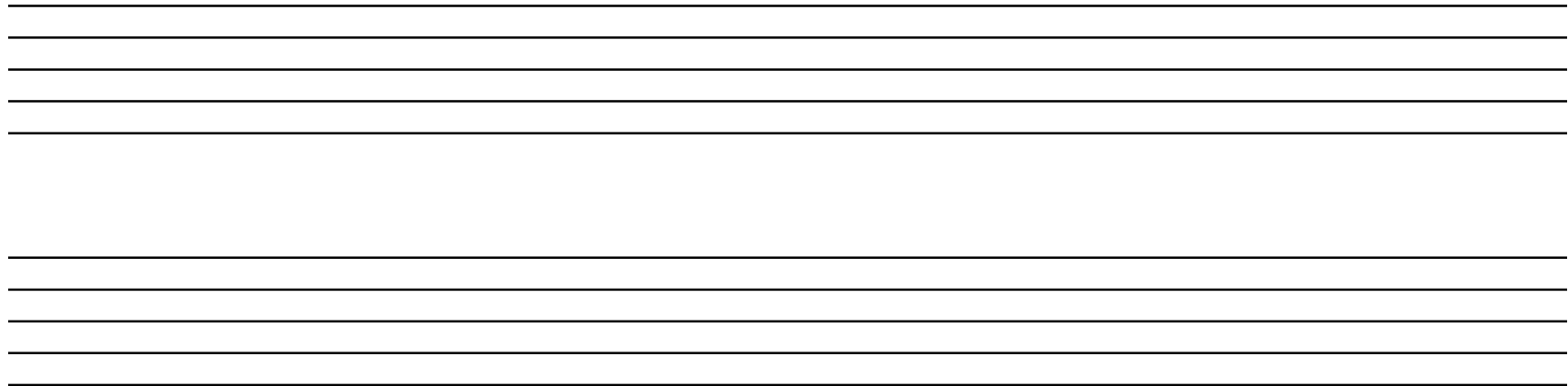
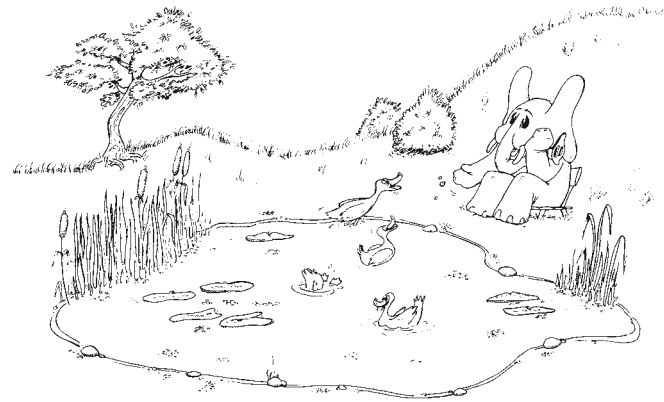


# Die Wiederholungszeichen

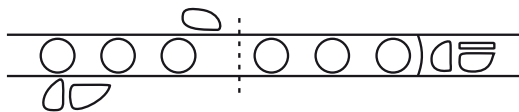
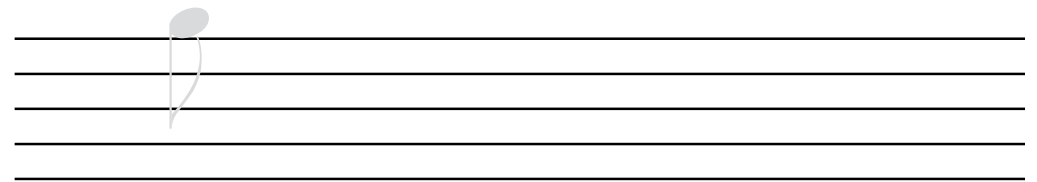
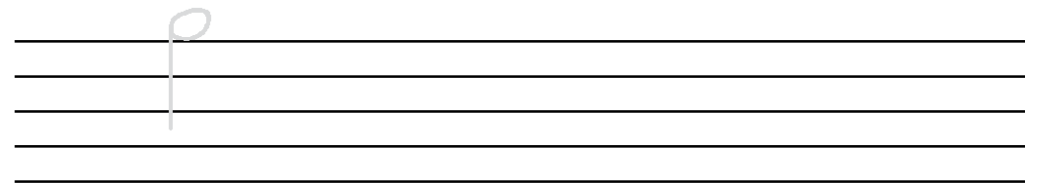
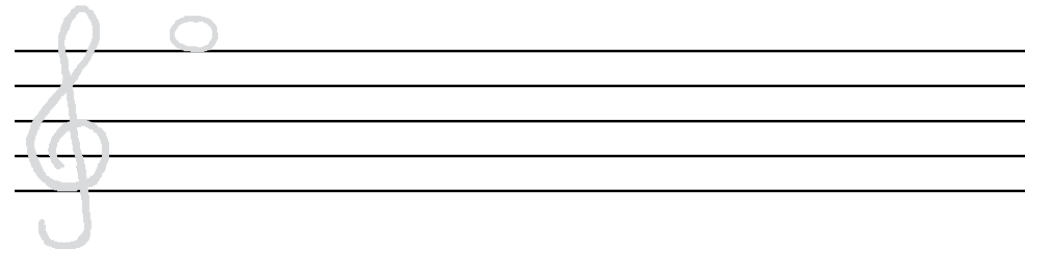
Zeichne die Wiederholungszeichen nach. Zeige mit dem Finger, wie gespielt wird.



## Alle meine Entchen

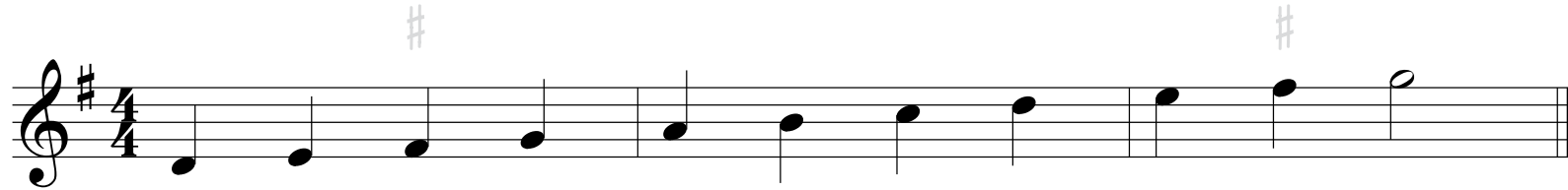


# Die Note g



# Das Kreuz # am Anfang der Notenzeile

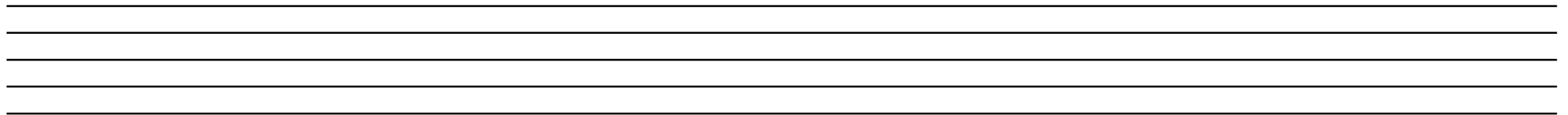
Steht am Anfang der Notenzeile ein Kreuz # , so wird bei allen f-Noten der Ton fis gespielt, bei den tiefen und bei den hohen.



Umkreise alle f-Noten, die zu dem Ton fis erhöht werden.



## Giraffentanz





# Summ, summ, summ, Bienchen summ herum

---

---

---

---

---

---

---

---

---

---

---

---

---

---

---

---



# Die Wiederholungsklammern

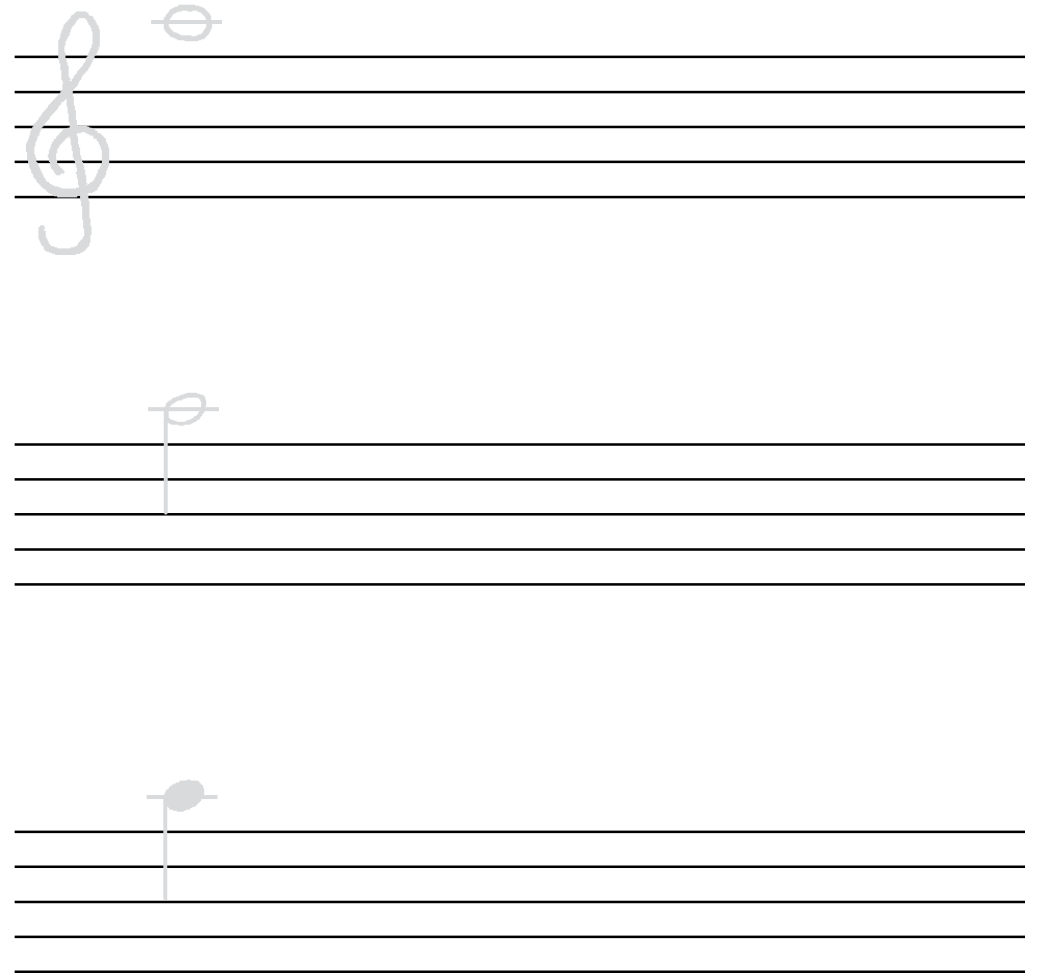
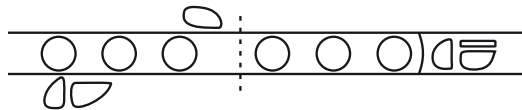
Zeichne das Wiederholungszeichen mit den Wiederholungsklammern nach.  
Zeige mit dem Finger, wie gespielt wird.

A musical staff with a treble clef and a 4/4 time signature. The staff is divided into measures. Above the staff, there are two boxes labeled '1.' and '2.' with a double bar line between them. The staff contains a few notes in the first measure and a double bar line in the second measure.

## Hänsel und Gretel

Two sets of empty musical staves for writing.

# Die Note a



# Hoppe, hoppe Reiter

Teil 1

---

---

---

---

---

Teil 2

---

---

---

---

---

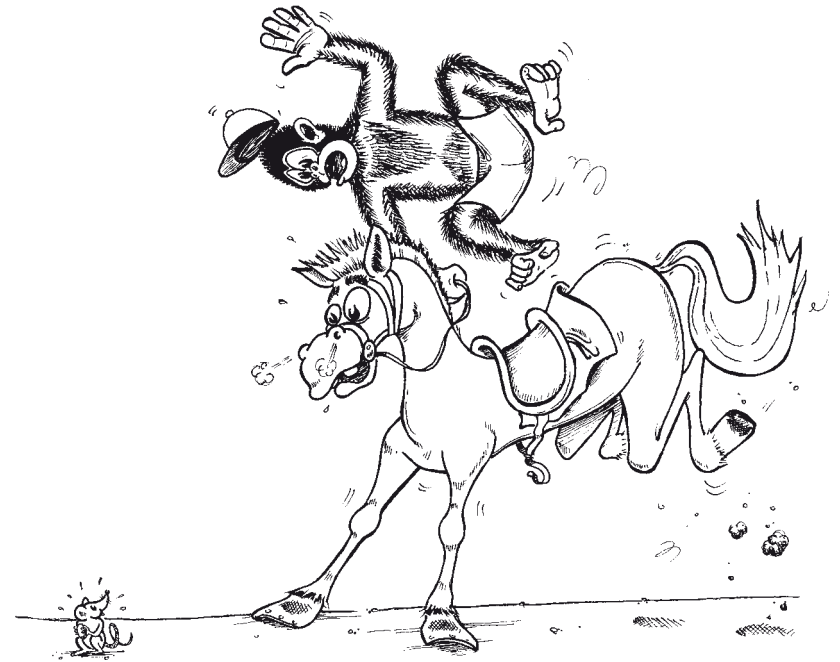
---

---

---

---

---



Teil 3

---

---

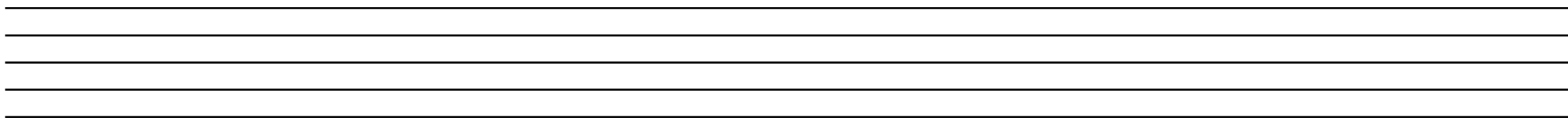
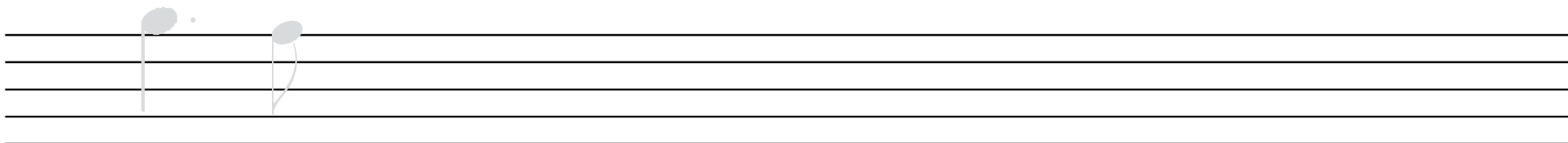
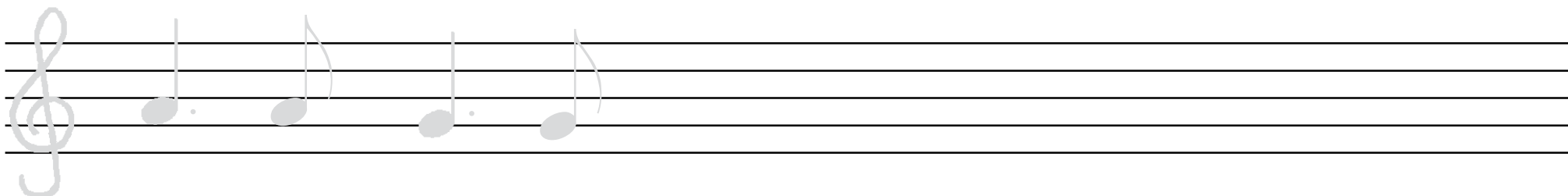
---

---

---

# Die Viertelnote mit Punkt + Achtelnote

Schreibe punktierte Viertelnoten mit nachfolgender Achtelnote



# Cowboy Bill

Teil 1

---

---

---

---

Teil 2

---

---

---

---

---

---

---

---



# Die Note b



b o

A musical staff with a treble clef. A flat note (b) is written on the second line. The note is drawn in a light, sketchy style.

b f

A musical staff with a flat note (b) on the first line. The note is drawn in a light, sketchy style.

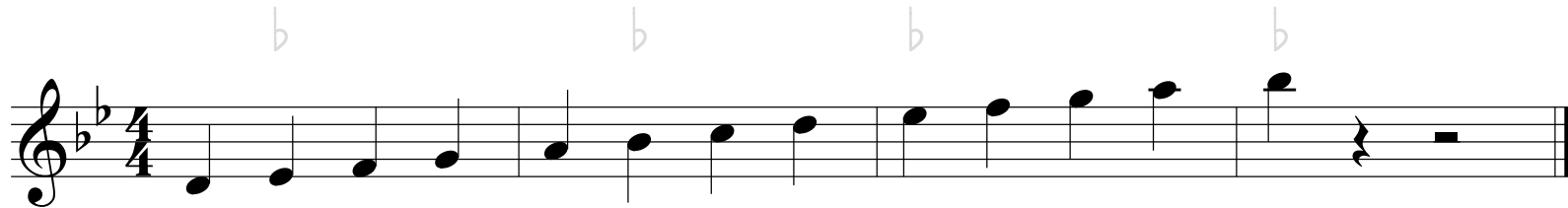
b o

A musical staff with a flat note (b) on the second line. The note is drawn in a light, sketchy style.

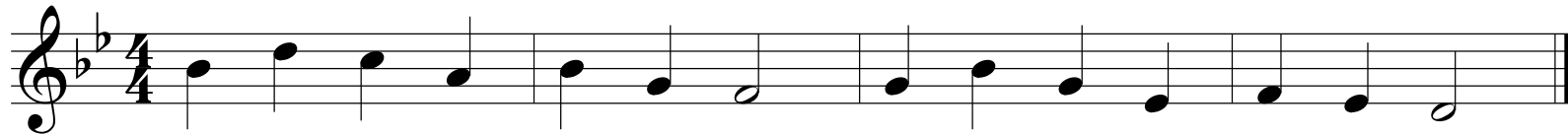
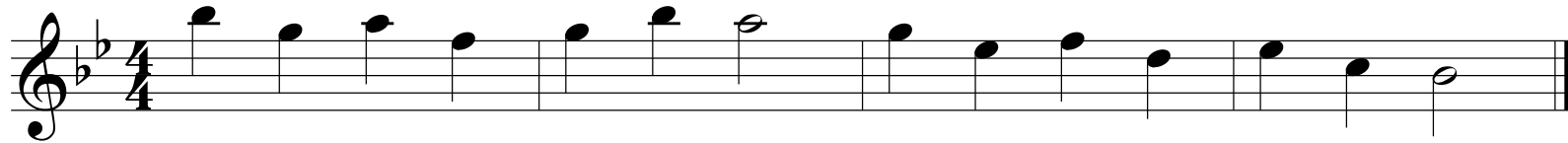
Two musical staves. The top staff shows a sequence of notes: a quarter note on the first line, a quarter note on the first line, a quarter note on the first line, a dotted quarter note on the first line, and a half note on the first line. The bottom staff shows the same sequence of notes. The word "oder" is written between the two staves.

# Zwei $b$ am Anfang der Notenzeile

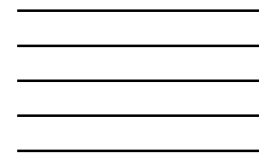
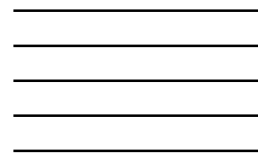
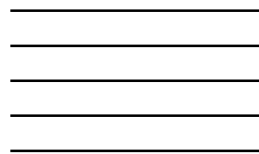
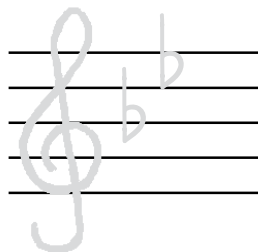
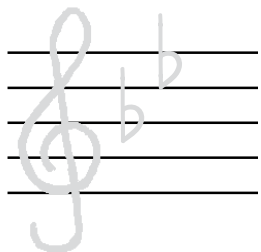
Stehen am Anfang der Notenzeile zwei  $b$ -Vorzeichen, so wird bei allen h-Noten der Ton  $b$  gespielt und bei allen e-Noten der Ton  $es$ .



Umkreise alle h-Noten und e-Noten, die zu  $b$  und  $es$  erniedrigt werden.



Zeichne den Violinschlüssel mit den beiden  $b$ -Vorzeichen.





# Die Lautstärke

Mache einen Strich zwischen der italienischen Abkürzung und dem richtigen italienischen Wort.

Mache einen Strich zwischen dem italienischen Wort und der deutschen Übersetzung

*mp*

*p*

*mf*

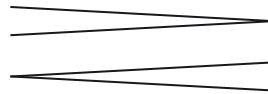
*f*

piano

mezzoforte

forte

mezzopiano



laut

halbleise

leise

halblaut

lauter werden

leiser werden

## Abend wird es wieder

Johann Christian Heinrich Rinck (1770 - 1846)

---

---

---

---

---

---

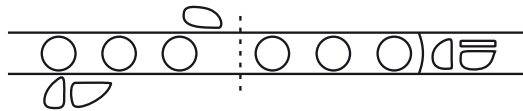
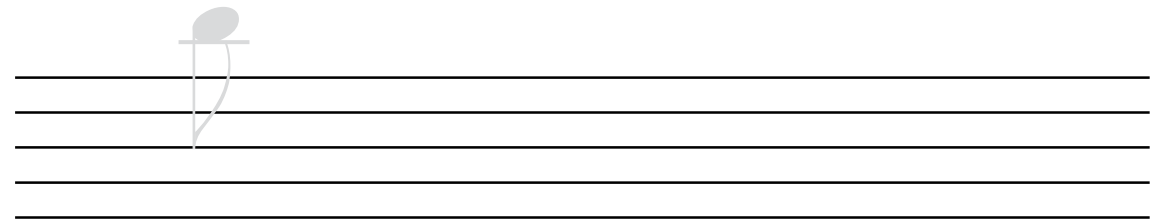
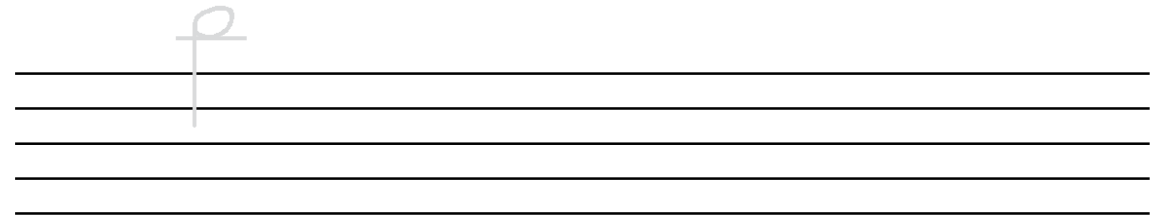
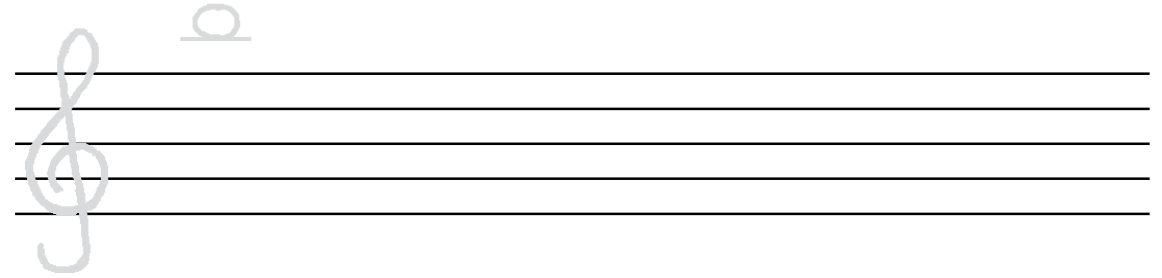
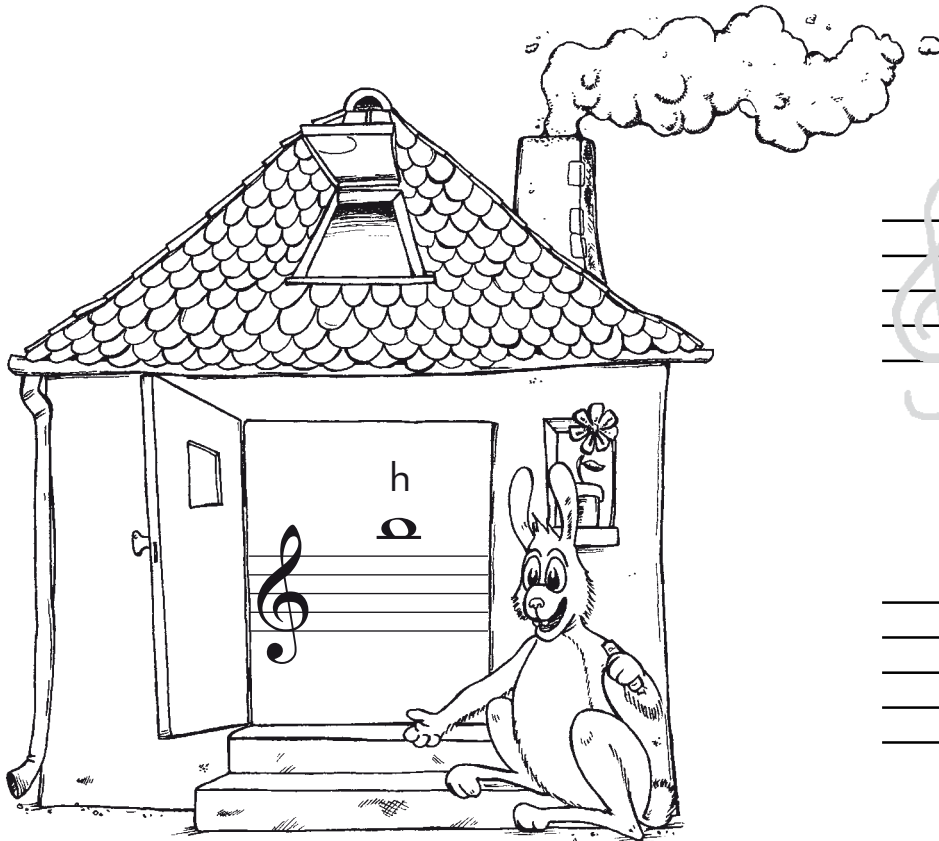
---

---

---

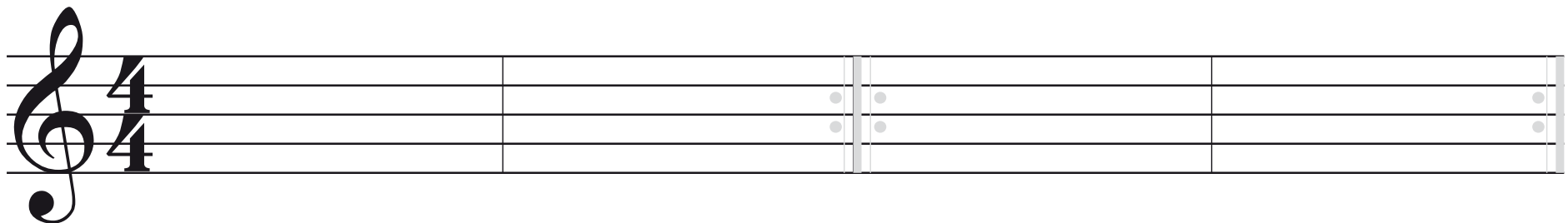
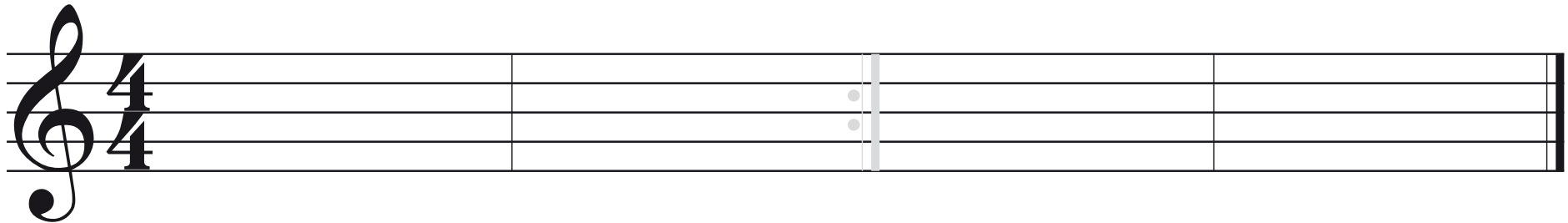
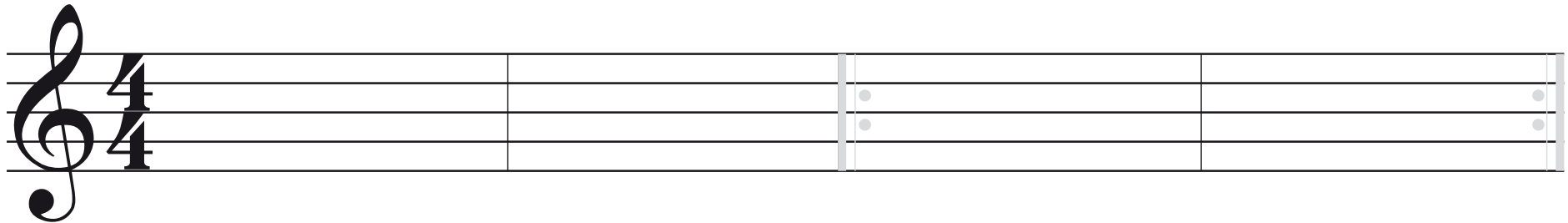
---

# Die Note h (hoch)



# Die Wiederholungszeichen

Zeichne die Wiederholungszeichen nach.  
Zeige mit dem Finger, wie gespielt wird.



# Hans hat Hosen an

---

---

---

---

---

---

---

---

---

---

---

---

---

---

---

---

---

---

---

---

---

---

---

---

---

---

---

---

---

---



# Die Note c (hoch)



A musical staff with a treble clef. A note 'c' is written on the second line. The staff is empty for the rest of the page.

A musical staff with a sequence of notes. The first three notes are quarter notes on the first line, followed by a bar line, then three more quarter notes on the first line, and finally a quarter rest on the first line.

# Jagdsignal



---

---

---

---

---

---

---

---

---

---



# Notenlinien



Handwriting practice area consisting of ten sets of four horizontal lines.

